



Developer

Site Address

Rashmi Pearl

Opp. Shri Hari Residency, Nr. Karnavati-2 Residency,
Narol-Aslali Highway, Narol, Ahmedabad.

Contact

99099 77185, 90999 99766

info@rashmiengicon.com

www.rashmiengicon.com

RARA No. : AHD TPO / 180 718 / 005721

Architecture

studio prAcademics,

Ahmedabad

Structural

AMU Consultant

Ahmedabad



I & 2 BHK LUXURIOUS LIVING

HARMONY
OF NATURE & PLEASURE...

3D SQUAD 99988 50771

SKYLINE IS ABOUT TO
GET A BEAUTIFUL
MAKEOVER...



Spacious and wide setting, open and inviting landscape with aesthetically done architecture... together it creates a place worth spending your lifetime.

Breathe in calmness and innermost peace as the pure air flowing at Rashmi Pearl carries the music of lifelong contentment.





ENTER

TO THE NEW WAY OF
URBAN LIVING...

Rashmi Pearl takes you to the new age urban living where warmth of home blends with worldly leisure to create a lifestyle of perfect accord.



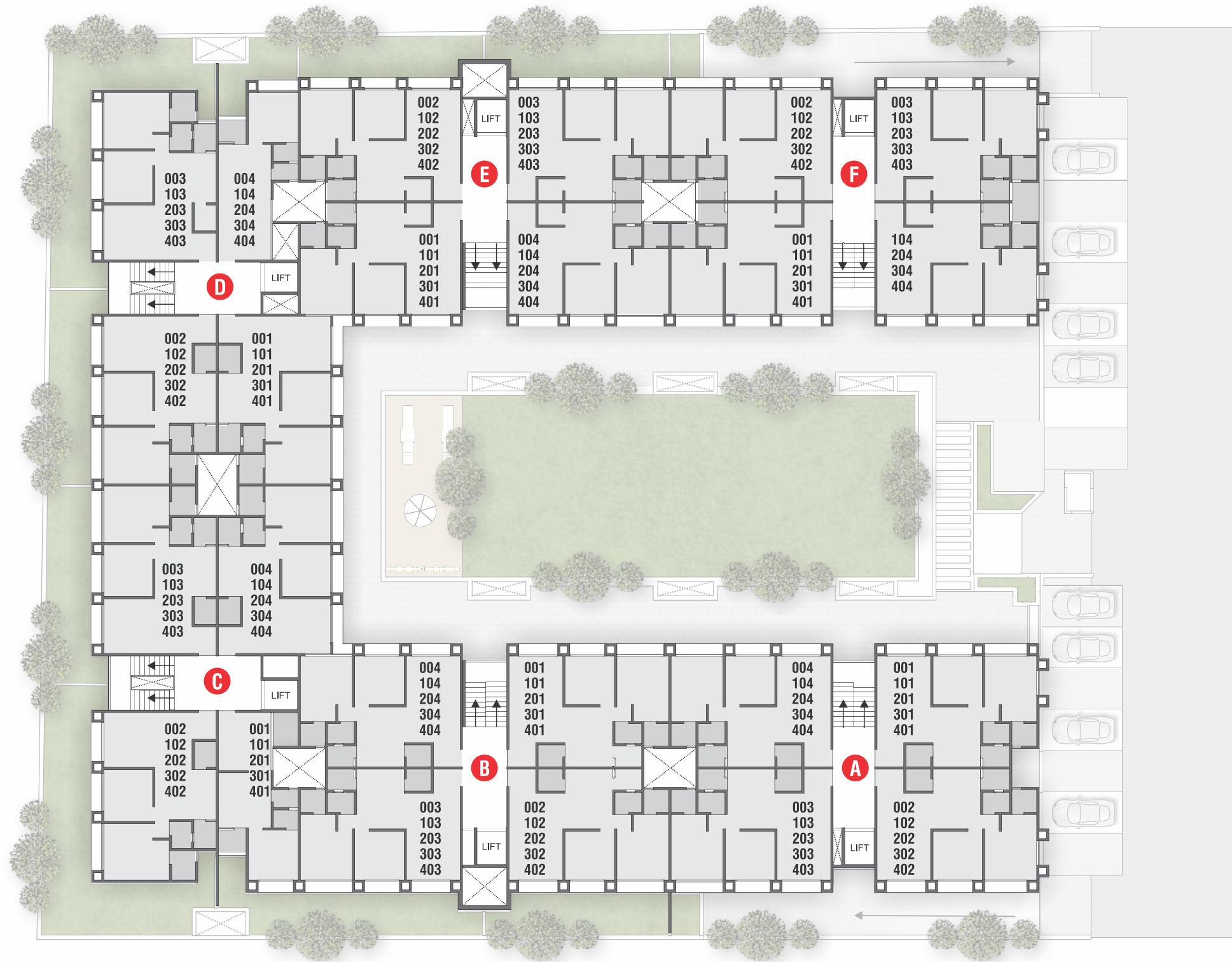


| | | |
|--|--|--|
|  Entrance Gate |  24 Hours Security with Cabin |  Entrance Foyer |
|  Allotted Parking |  C.C.TV Camera |  Senior Citizen Sitting |
|  Gymnasium |  Multipurpose Hall |  Indoor Games |
|  Landscape Garden |  Gazebo |  Children Play Area |

GROUND
FLOOR



TYPICAL FLOOR

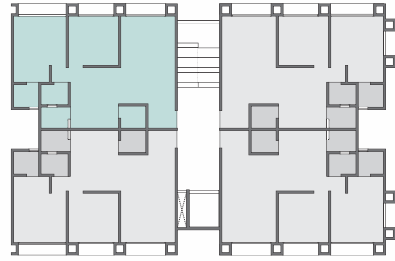
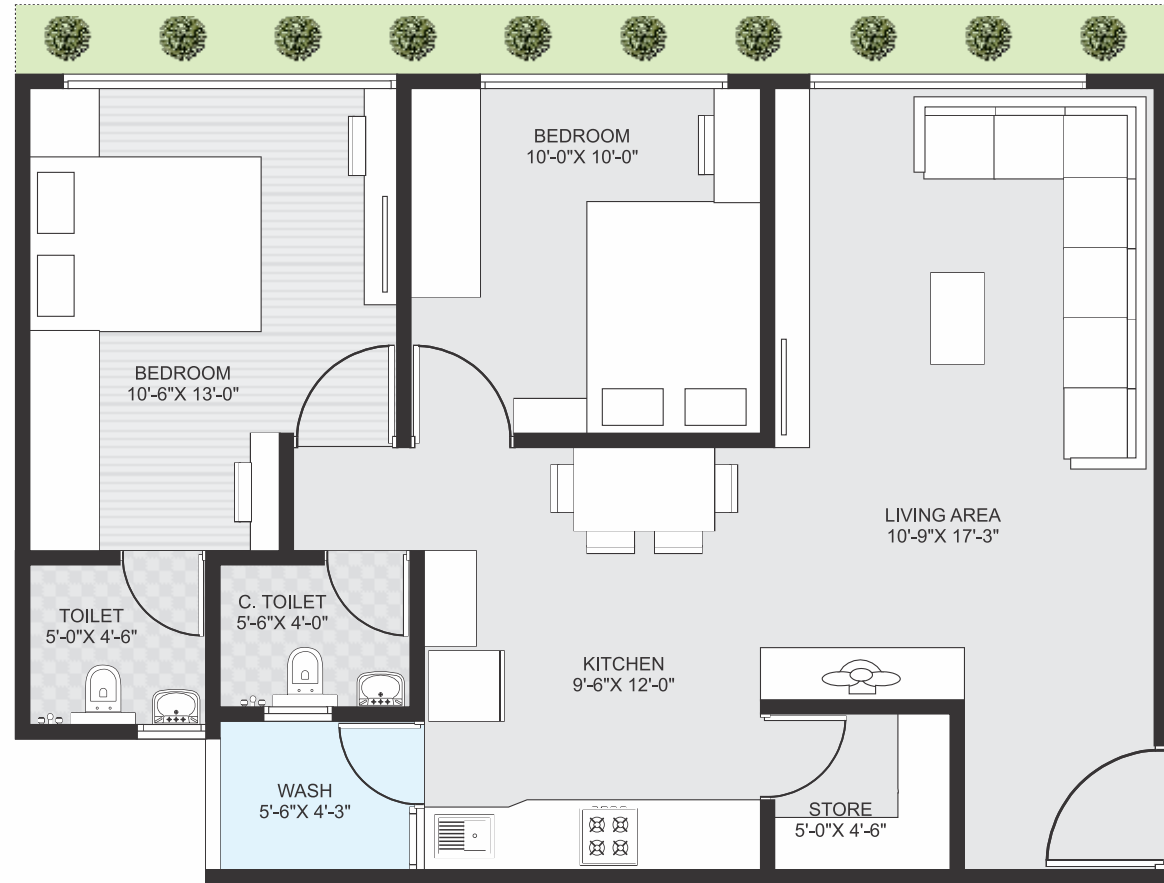


BASEMENT PARKING



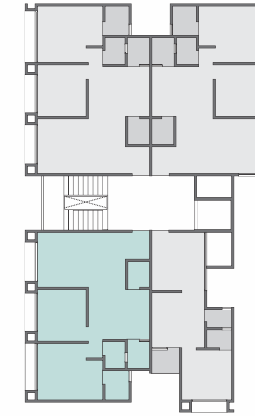
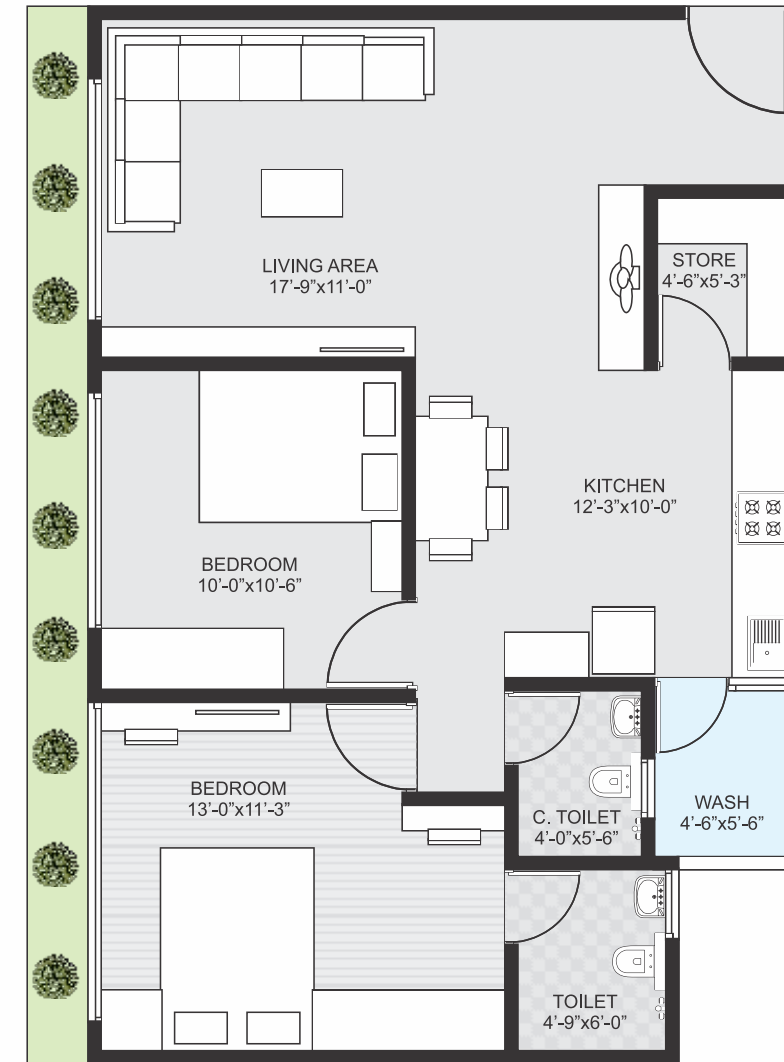
2 BHK, TYPE I

Block A, B, E & F



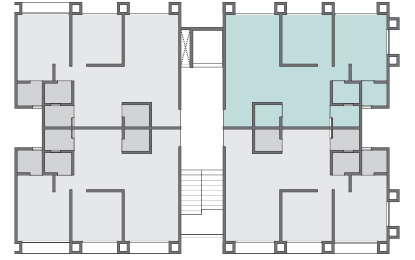
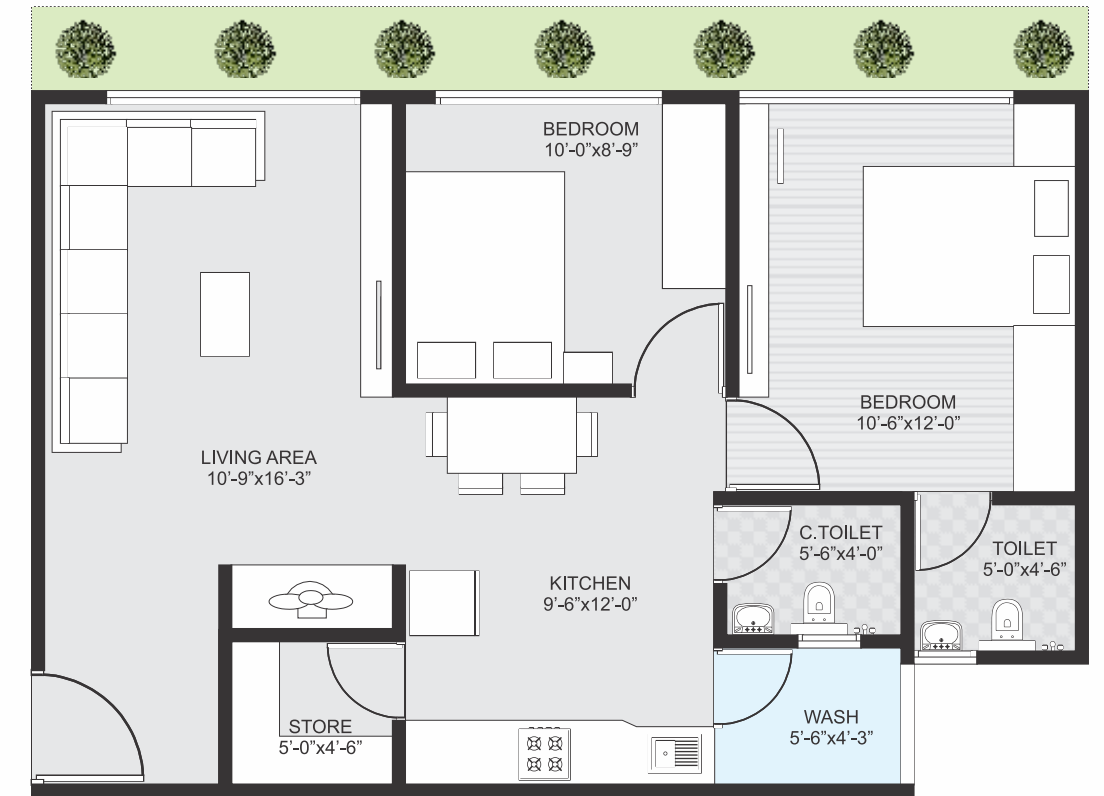
2 BHK, TYPE 3

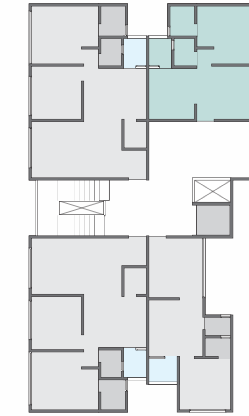
Block C & D



2 BHK, TYPE 4

Block F



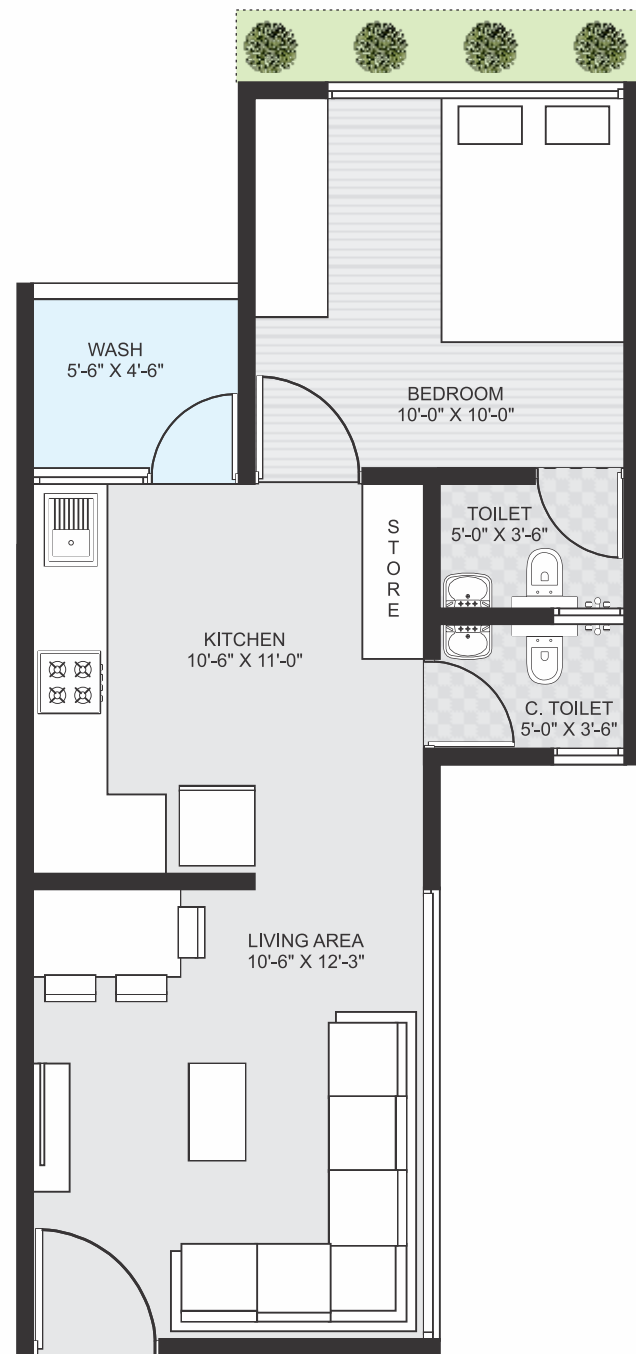
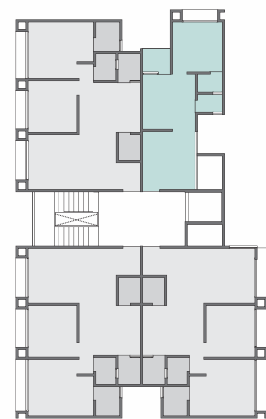


I BHK, TYPE 4

Block C & D



I BHK, TYPE I
Block D & E



SPECIFICATION



FOYER

- Ultra modern entrance Foyer.



BEST QUALITY FLOORING

- Vitrified Flooring Twin charge. 2x2.



KITCHEN

- Granite Platform with S.S. Sink having drain board.
- Designer digital tiles up to lintel level.
- Designer wash basin in common area.



LIFT

- Automatic Door Lift.



DOOR

- Decorative main door with designer laminate along with handle and safety lock with full height.
- Wooden door frames.



WINDOWS

- Anodized aluminium section with glass.
- Full size windows in living room & three bedroom for air ventilation.



STRUCTURE

- Earthquake Resistance.



ROAD

- RCC road for internal campus with marble.



TERRACE

- Double coat fully water proofing with china mosaic.



ENAMEL

- Acrylic water proof paint on external wall.
- Acrylic colour in common areas.
- Well refined putty on internal walls.
- Dulex / Asian / Burger Paints.



ELECTRIFICATION

- Modular witches & concealed circuit wiring.
- Sufficient electric points in all rooms.
- M.C.B. in individual flat for safety.
- High ampere special electric points for freeze, oven, Mixer, R.O. Plant, Floor Mill, Washing Machine, T.V., Geyser, Internet & Telephone.



PLUMBING

- Concealed modern plumbing system.
- I.S.I. brand CPVC & UPVC Plumbing & Drainage piping.
- Fitting By Excellent Series.
- Water Meter.



PARKING

- Basement with allotted Parking.

NOTES

All Government legal charges, stamp duty, Auda, common maintenance charges and service tax shall be borne extra by the members.· In case of irregular payments 18% (annual) interest will be charged.· In case of cancellation of unit 10% of payment received will be deducted as a management service charges and balance amount will be returned only after. the resell of the unit.· No external changes shall be allowed. only internal changes will be allowed with prior permission and shall be charges extra in advance.· Dimension and area mentioned in the brochure are approximate and indicative.· This brochure is not a part of legal documents. It is only for information and private circulation.· All Right are reserve by the developers to make any changes in the plan, elevation, specification and future additional development in surrounding area in the scheme and shall be binding to all the members.· Subject to Ahmedabad jurisdiction.

KEY PLAN

