

# THE GREEN PARMESHWAR

2 & 3 BHK MODERN HOMES & SHOPS

Beside City Square Mall, Godrej Garden City,  
Jagatpur, Ahmedabad - 382470

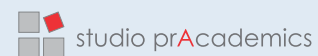
The Graceful Perfection

DEVELOPER  
OM INFRASTRUCTURE

CONTACT  
94266 77138 | 75758 69621

PR/GJ/AHMEDABAD/AHMEDABAD CITY/AUDA/MAA12022/280623 | [www.gujrerar1.gujarat.gov.in](http://www.gujrerar1.gujarat.gov.in)

ARCHITECT



STRUCTURE ENGINEER



LANDSCAPE CONSULTANT



MEP CONSULTANTS



brm.co.in

itgP

# THE GREEN

- Nature and Convenience: A Balanced Living
- Environmental and Budget Friendly
- 2 and 3 BHK Distinctive Apartments
- Full of Premium and Useful Amenities
- Apartments with 2 balconies

# THE PARMESHWAR

- Indoor and Outdoor Gyms
- Library Cum Co-Working Space
- Multipurpose and Banquet Hall
- Childrens' and Toddlers' Play Area
- Terrace Deck Seating and Multilevel Treehouse

itap



A project by

# THE GREEN PARMESHWAR

2 & 3 BHK MODERN HOMES & SHOPS

A prime residential property providing exceptional value in the form of a comfortable and thoughtfully designed home in a well-connected locality.

The 2 and 3 BHK homes in the developing residential locality of Jagatpur provides a solid holistic living environment surrounded by plentiful greenery and equipped with amenities.



- 07 TOWERS
- 14 STORIES
- 97 SHOPS
- 348 RESIDENTIAL UNITS







## Green Retreat for Rendezvous

- Intelligent Landscaping Integrating Modern Architecture
- A Seamless Blend of Aesthetics and Functionality
- Harmonious Gathering Space for Fun and Socializing







## Delightful Playful Wonderland

- A Captivating and Dynamic Space with Variety of Play Structures
- Designed to Ignite the Imagination and Endless Entertainment
- Crafted with a Focus on Safety and Developmental Opportunities







## Terrace Escapades for Ultimate Relaxation

- Panoramic Views and a Serene Ambient Seating
- Place to Unwind, Entertain, Enjoy and Practice
- A Seamless Elevated Transition for Strolls





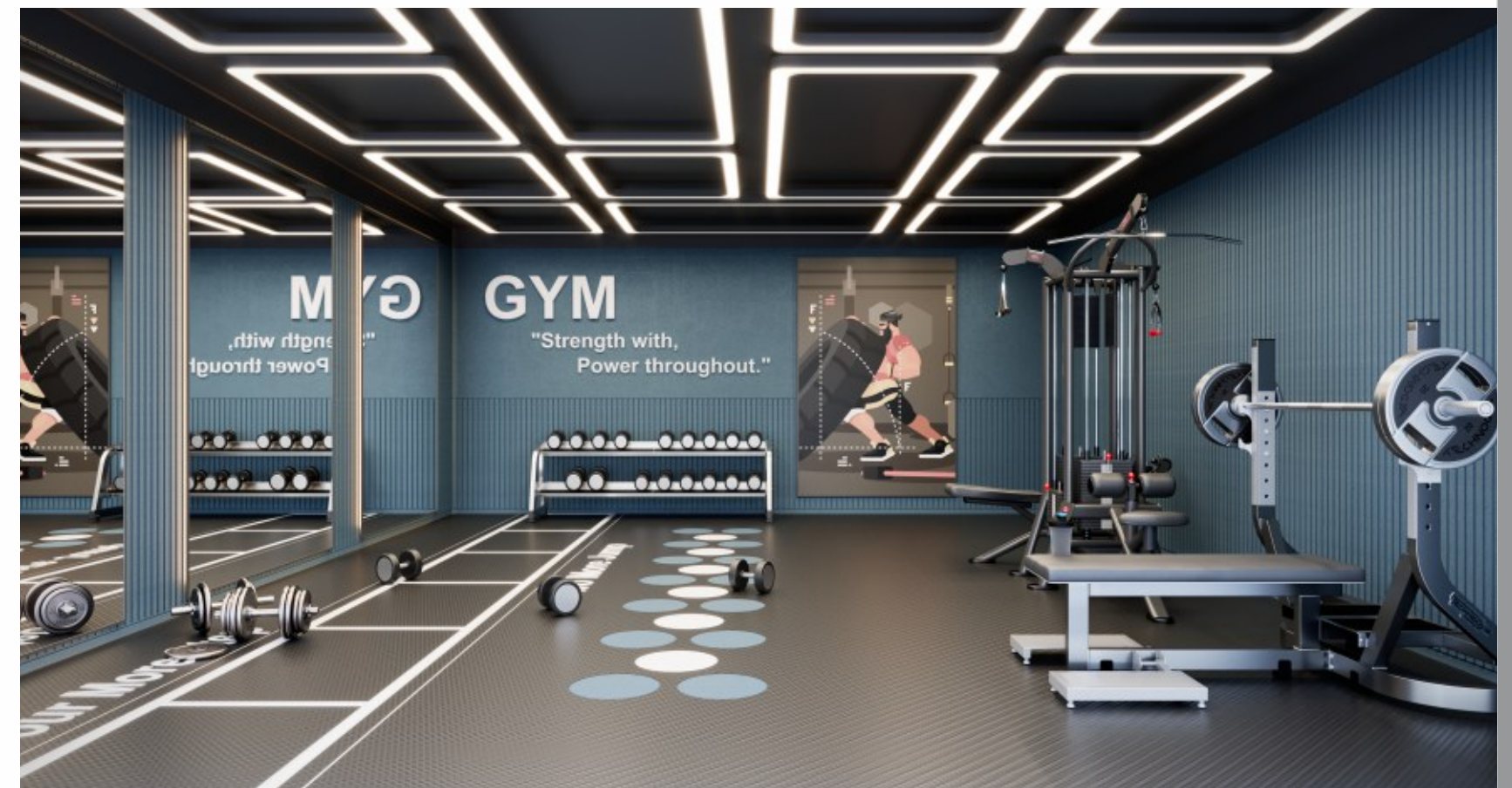


### Relaxing Ethereal Disposes

- Immersive Theatre with Great Acoustic Range
- Regal Banquet Hall for Memorable Celebrations
- Stimulating Library Space for Existential Reflections







## Versatile Functional Conveniences

- Full Service and Creative Work From Home Area
- Toddlers' Play Area That Enhances Growth
- Endurance-focused Gymnasium





# Retentive Elevated Features

- Engaging and Amusing Indoor Game Area
- Practical Aesthetic Outdoor Space on Terraces
- Electric and Calibrated Fitness Studio

،ف



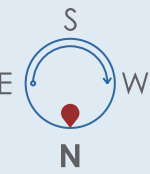
## AMENITIES

- BANQUET HALL WITH KITCHEN, STORE & TOILETS
- HOME THEATER
- SENIOR CITIZEN SEATING AREA
- CHILDREN’S PLAY AREA
- TODDLER PLAY AREA
- LIBRARY / STUDY ROOM
- CO-WORKING SPACE
- 2 INDOOR GAMES
- LANDSCAPE GARDEN
- INDOOR KIDS PLAY
- BOX CRICKET
- 2 INDOOR GYM (MACHINE, WEIGHT TRAINING)
- OUTDOOR GYM ON TERRACE
- OPEN TO SKY YOGA SPACE
- KIDS FRIENDLY FLOOR GAMES ON TERRACE
- DECK SEATING AREA ON TERRACE
- SURROUNDED MUSIC SYSTEM ON GARDEN AREA
- COVERED SWING AREA
- MULTILEVEL TREE HOUSE SEATING DECK
- OPEN AIR AMPHITHEATRE

## FEATURES

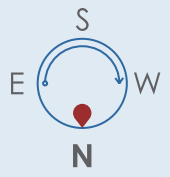
- ENTRANCE PLAZA
- SIGNAGE WALL WITH PLANTING & LIGHTING
- SECURITY CABIN WITH GATE
- 24X7 SECURITY
- ALLOCATED PARKING
- GRANITE PAVED WALKWAYS
- TWO WHEELER PARKING IN BASEMENT
- FUNCTIONAL LAWN AREA
- COVERED SEATING WITH TENSILE ROOF
- WELL DEVELOPED COMMON TERRACE WITH WALKING TRACK
- KIDS ORIENTED, NO VEHICLE ZONE LANDSCAPE
- DECORATIVE DOUBLE HEIGHT ENTRANCE FOYER
- DECORATIVE ENTRANCE LOBBY IN EACH BLOCK
- 2 AUTOMATIC STRETCHER SIZE LIFTS IN EACH BLOCK
- PERSONAL FOYER FOR EACH APARTMENT
- SOCIETY COMMON OFFICE
- HANDICAP RAMP & COMMON TOILET
- WELL EQUIPPED FIRE HYDRANT SYSTEM
- CCTV SURVEILLANCE IN THE COMMON AREA
- 24HRS WATER
- DRIVER AND SECURITY REST ROOM
- SOLAR PANEL
- POWER BACKUP GENERATOR

**Floor**





FIRST  
Floor



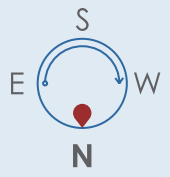
24 MT WIDE ROAD

24 MT WIDE ROAD





SECOND  
Floor



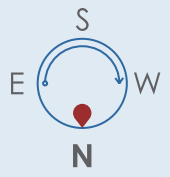
24 MT WIDE ROAD

24 MT WIDE ROAD



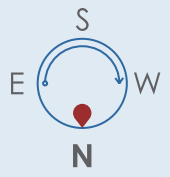


FLOOR  
Plan





TERRACE  
Floor



24 MT WIDE ROAD

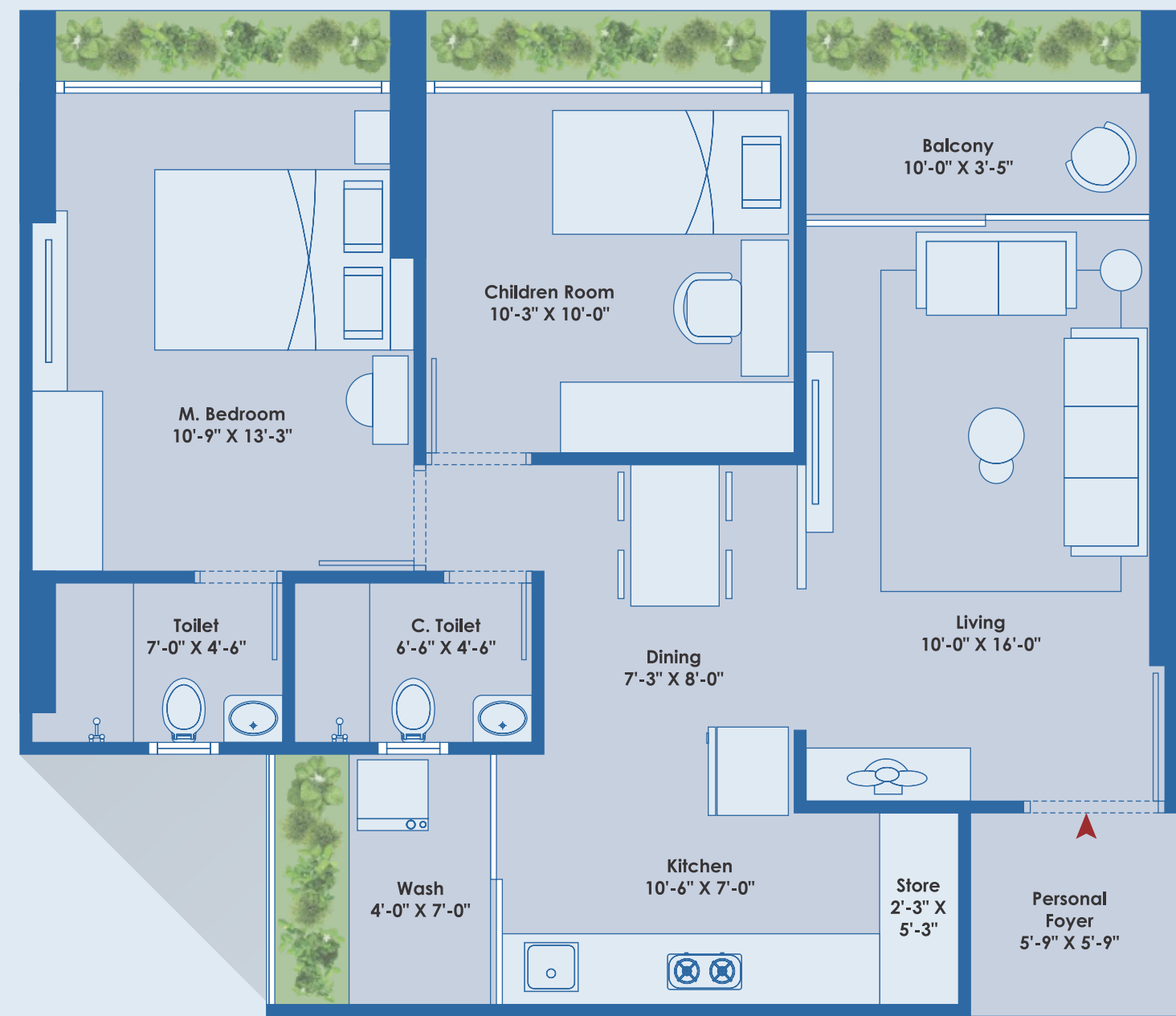
24 MT WIDE ROAD



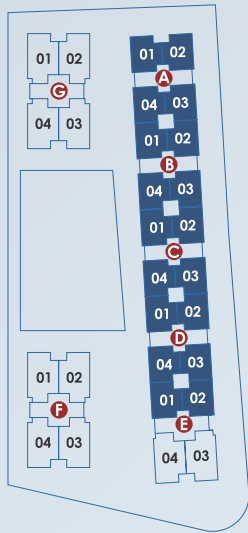


TYPE - A (2 BHK)

Built Up Area:- 68.85 Sq Mt



4,6,8,10,12 & 14<sup>th</sup> Floor

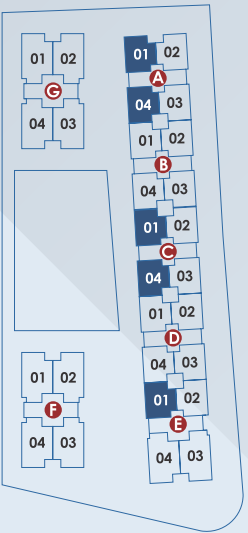


TYPE - B (2 BHK)

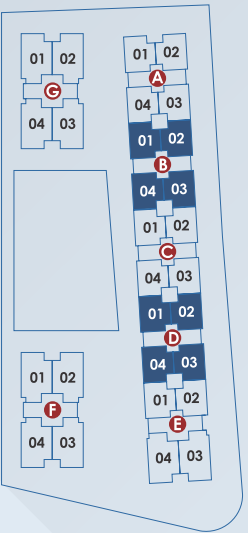
Built Up Area:- 74.02 Sq Mt



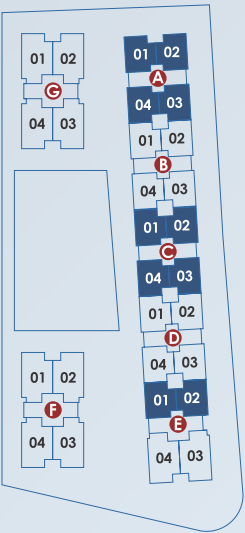
3<sup>rd</sup> Floor



5<sup>th</sup> & 11<sup>th</sup> Floor



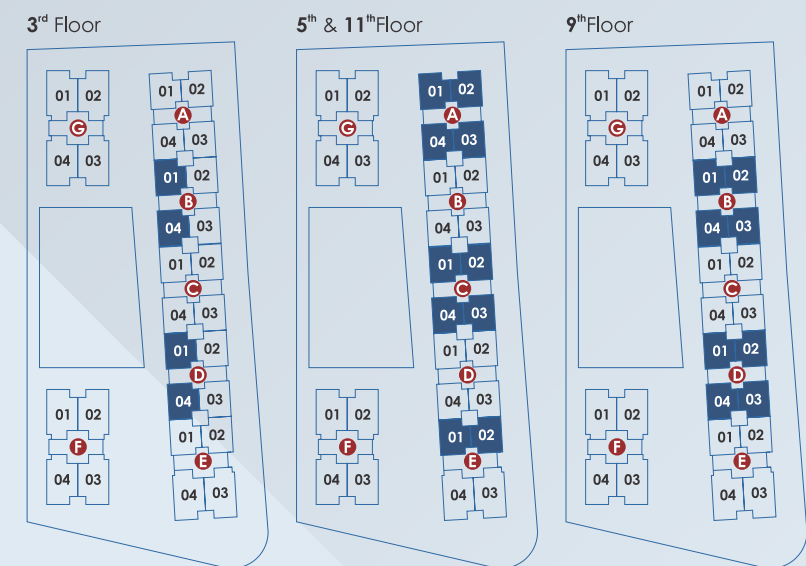
9<sup>th</sup> Floor





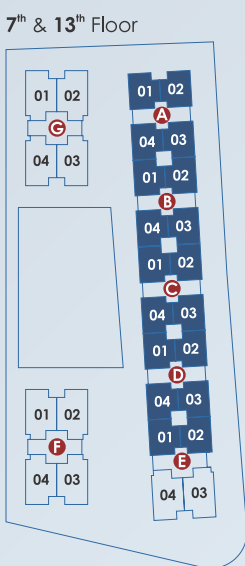
TYPE - C (2 BHK)

Built Up Area:- 74.01 Sq Mt



TYPE - D (2 BHK)

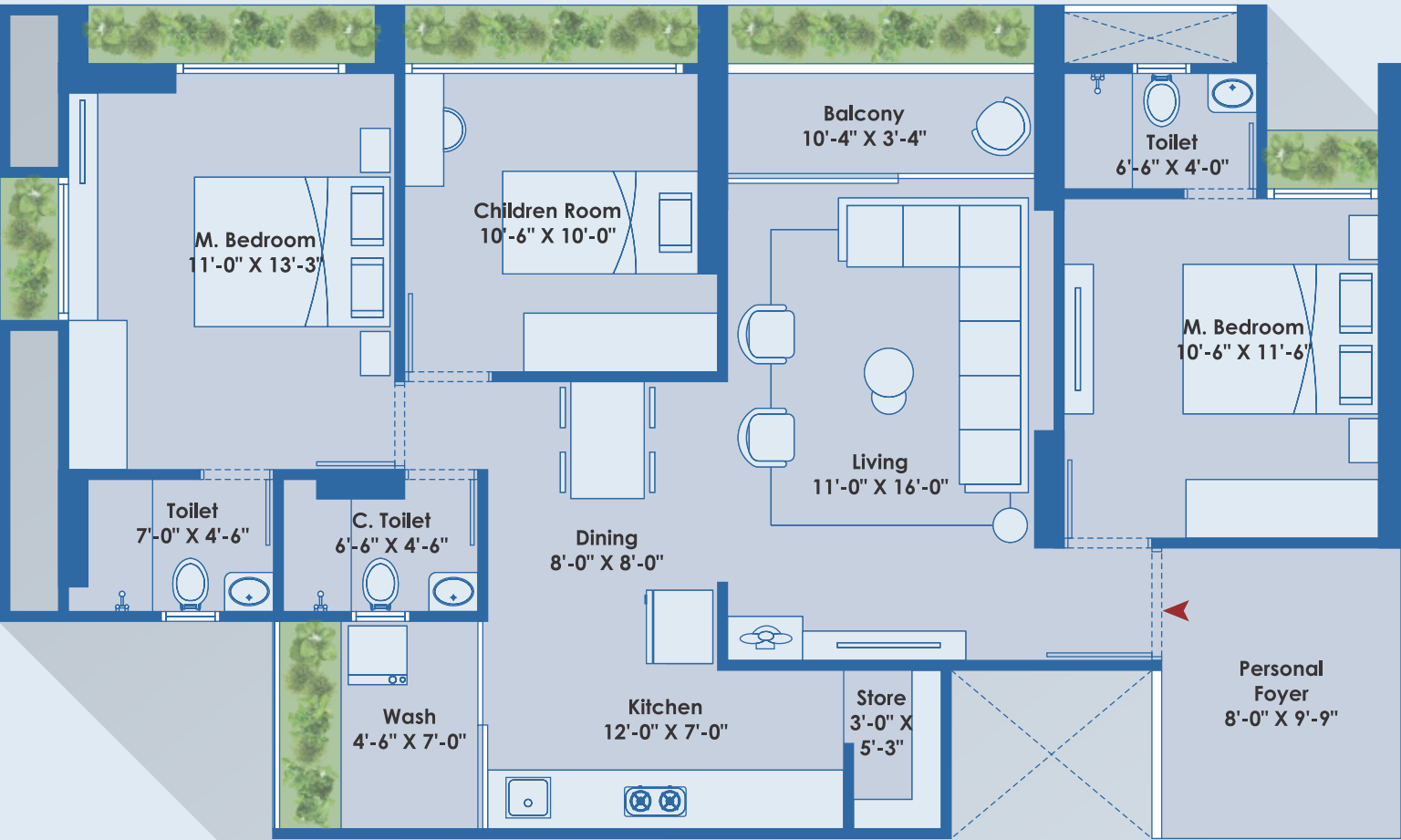
Built Up Area:- 74.12 Sq Mt



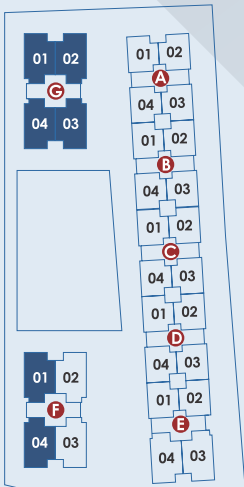


TYPE - A (3 BHK)

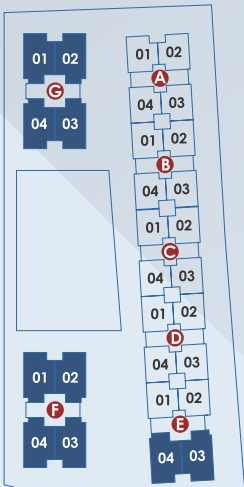
Built Up Area:- 90.05 Sq Mt



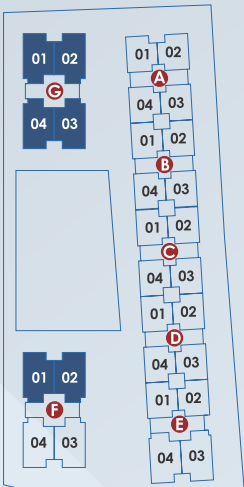
5,7,9,11 & 13<sup>th</sup> Floor



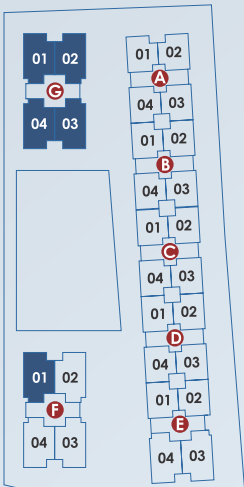
4,6,8,10,12 & 14<sup>th</sup> Floor



2<sup>nd</sup> Floor

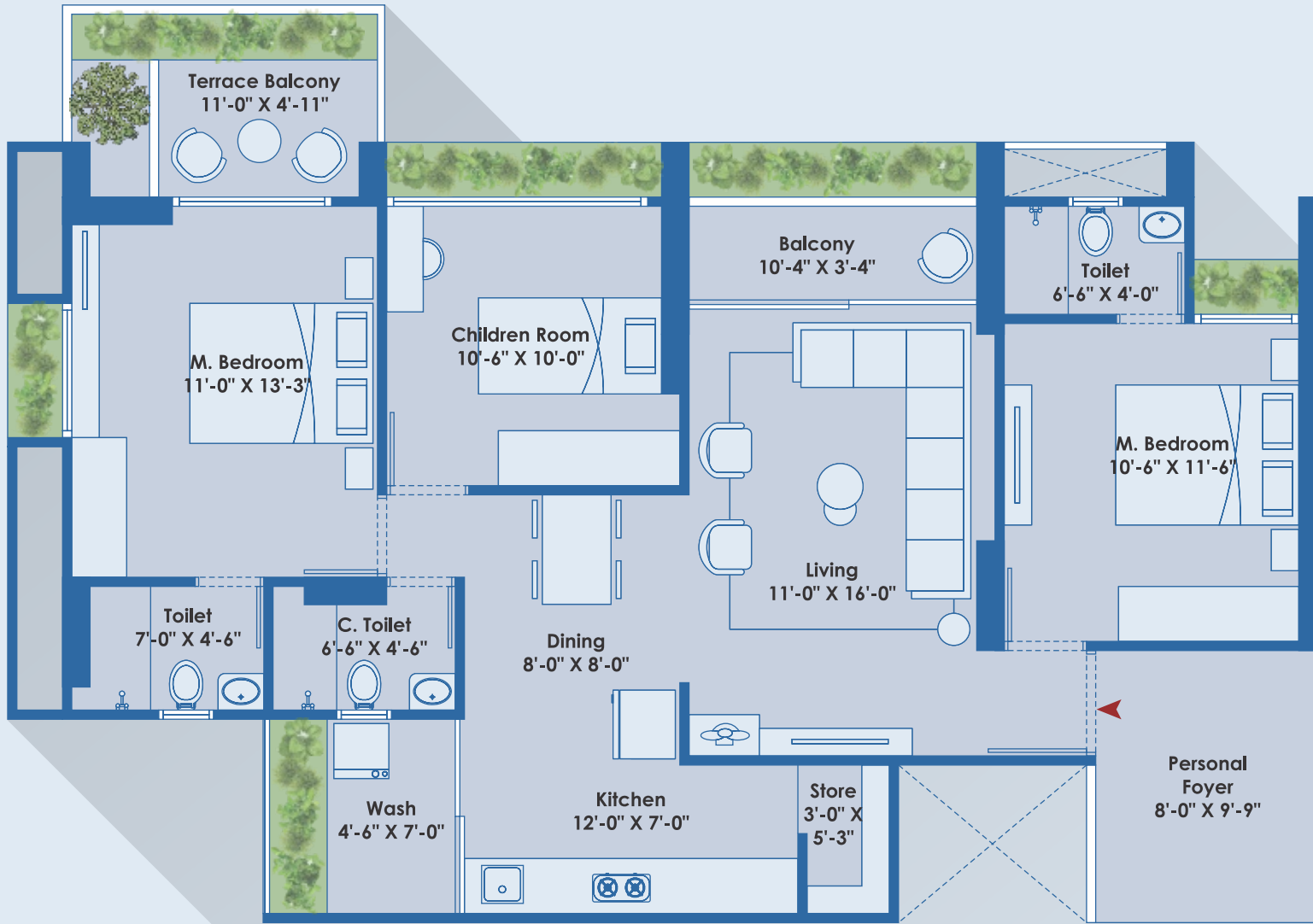


1<sup>st</sup> & 3<sup>rd</sup> Floor

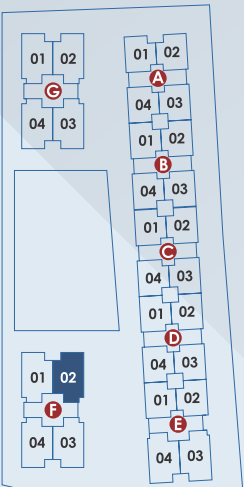


TYPE - B (3 BHK)

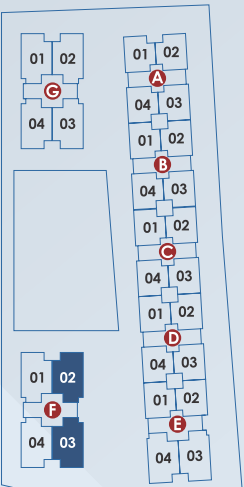
Built Up Area:- 95.35 Sq Mt



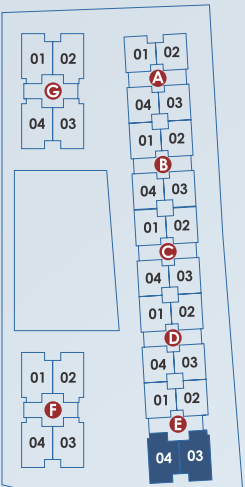
1<sup>st</sup> Floor



7<sup>th</sup> & 13<sup>th</sup> Floor

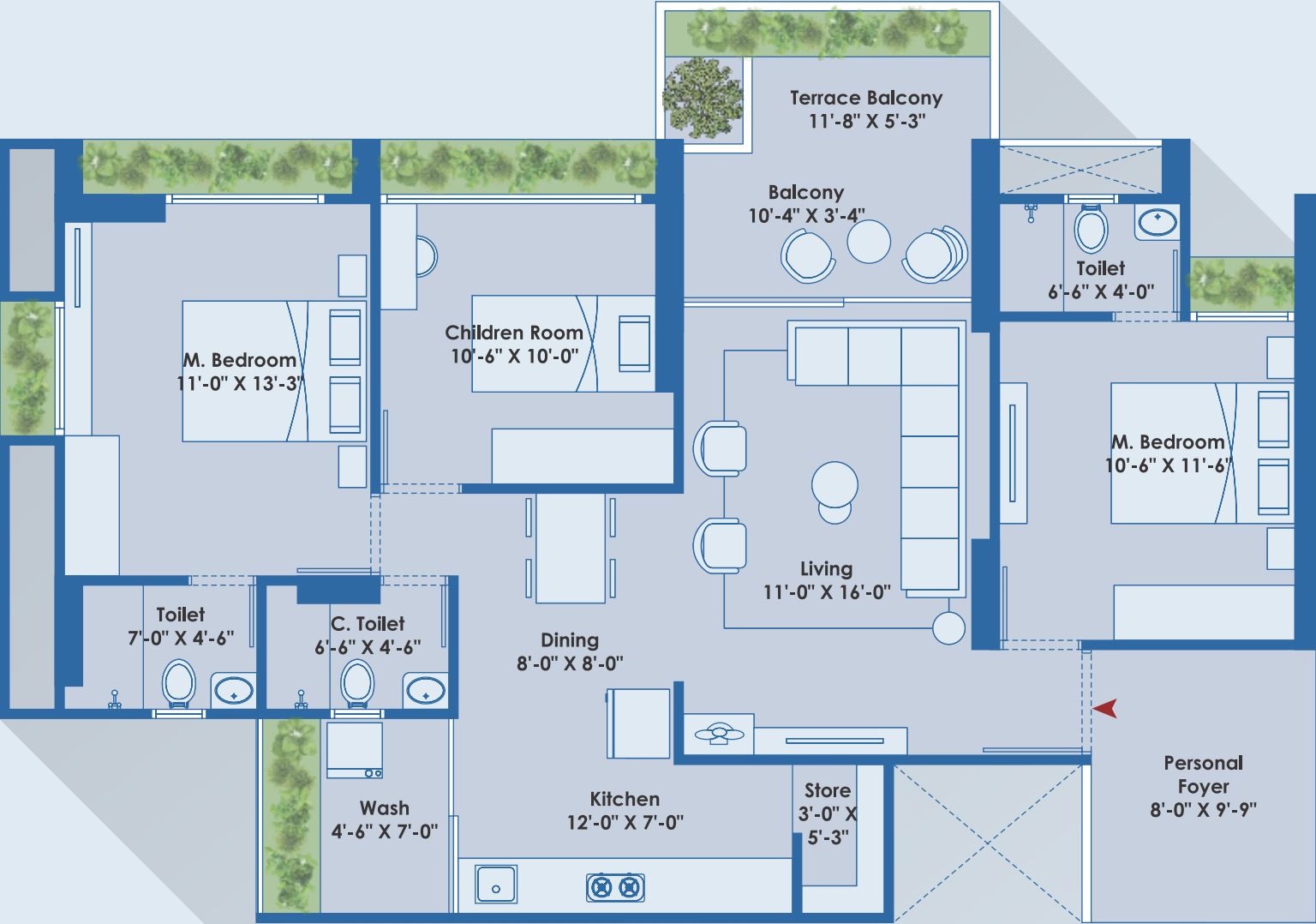


9<sup>th</sup> Floor

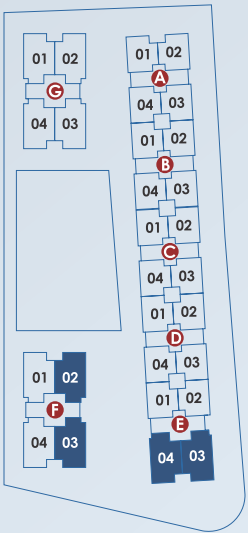




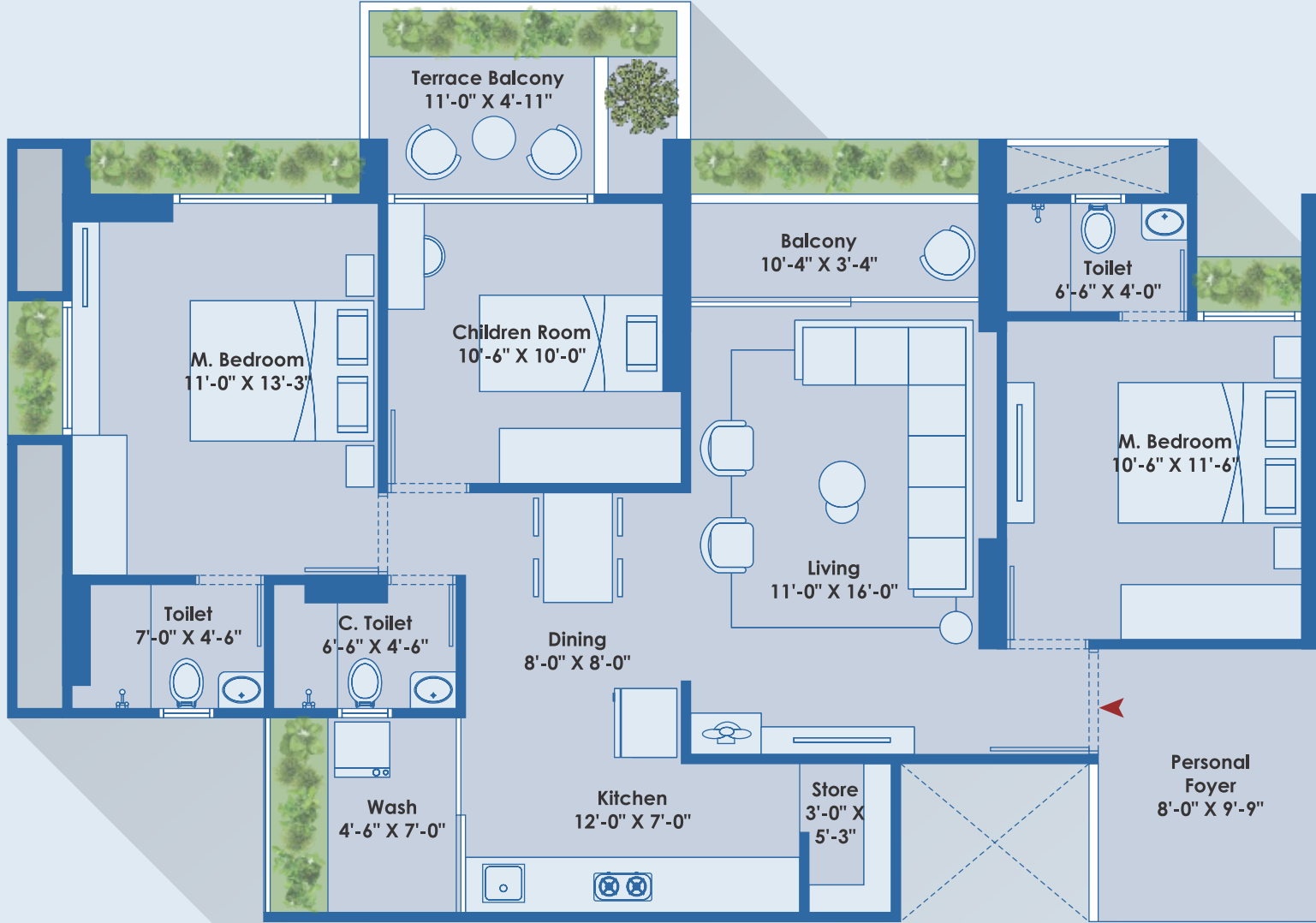
■ Built Up Area:- 95.66 Sq Mt



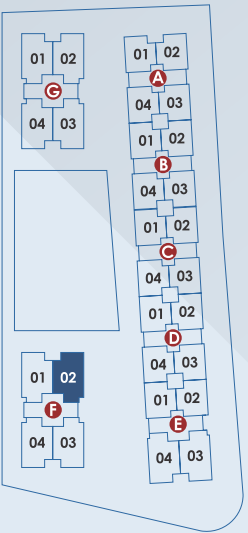
### 5<sup>th</sup> & 11<sup>th</sup> Floor



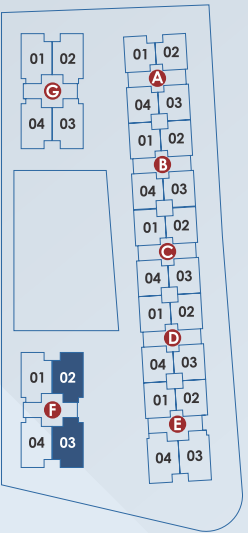
■ Built Up Area:- 95.66 Sq Mt



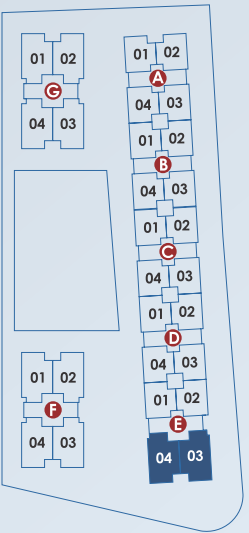
### 3<sup>rd</sup> Floor



## 9<sup>th</sup> Floor



### 7<sup>th</sup> & 13<sup>th</sup> Floor





## Elevation

- Unique Impressive Elevation that Stands Out
- Ensuring a Pleasing Visual Composition
- Reflects the Architectural Vision and Creativity







## SPECIFICATIONS

### STRUCTURE

- RCC frame structure.
- Structure design as per in code considering earthquake resistance.

### WALL

- All internal walls will be finished with putty over mala plaster.
- All external wall will be finished with double coat mala plaster.

### PLUMBING

- Concealed plumbing with premium quality pipes and fittings.
- For continuous water supply, A common bore well.

### FLOOR FINISH

- Premium quality vitrified tiles in drawing room, dining area with kitchen and all bedroom area.

### KITCHEN

- Ready to use granite finished platform with S.S sink.
- Glazed tiles with dado up to beam level.
- Plumbing and electrical provisions for water purifier & washing machine.

### ELECTRIFICATION

- Concealed copper flexible wiring with adequate number of electrical point & branded modular switches.
- TV & AC point in drawing room and bedrooms.
- MCB in individual flat for safety.

### DOOR & WINDOWS

- Decorative main entrance door with fitting and fixtures.
- All other doors are flush doors.
- Fully aluminum section windows.

### TOILETS

- Full covered elegantly designed toilets with tiles and sanitary ware.

### TERRACE

- Open terrace finished with suitable waterproofing with china-mosaic flooring for heat reflection.
- Well developed common terrace.

### RULES & REGULATIONS:

Changes in elevation shall not be allowed to be done by members of society. • All the government & semi government charges like stamp duty, service tax/GST, Vat and any tax by state or central government shall be borne by members. • Legal documentation charges, UGVCL, PNG gas connection charges, AUDA, Narmada water charges, Advance maintenance shall be borne by the members separately. • All the rights are reserved by developer to make any changes in Layout plan, Exterior elevation, Dimension and other details there in to comply with statutory regulation shall be binding to all the members. • Any additional liabilities due to change in the bye laws, shall be borne by members. • This brochure is not as legal pan of document but only for easy presentation to members. • Subject to Ahmedabad jurisdiction.







LOCATION

Feature

EDUCATIONAL INSTITUTES		
Global Indian International School	:	1.0 km
Apollo International School	:	2.0 Km
Dr. Babasaheb Ambedkar Open University	:	3.2 km
Nirma University	:	4.1 km
Silver Oak University	:	4.6 km
Hiramani School	:	4.7 km
SGVP International School	:	4.8 km
Vishwakarma Govt. Eng. College	:	6.8 km

CORPORATE OFFICES		
Zydus Corporate House	:	3.6 km
Lubi Corporate House	:	3.6 km
Adani Corporate House	:	6.7 km

HOSPITALS		
Lifeline Hospital	:	2.8 km
Satyamev Hospital	:	3.3 km
KD Hospital	:	4.3 km
SGVP Holistic Hospital	:	4.8 km

SPORTS / RELIGIOUS / SHOPPING		
Jain Derasar - Savvy Swaraaj	:	1.2 km
Savvy Sports Complex	:	1.6 km
Center Point	:	2.0 km
Vaishnodevi Temple	:	4.1 km
4D Square Mall	:	6.4 km

Metro Station	:	5.6Km
Railway Station (Sabarmati)	:	6.6 km
Arved Transcube Plaza (Ranip)	:	7.5 km
Railway Station (Kalupur)	:	14.7 km
Airport	:	15.8Km

THE GREEN  
PARMESHWAR

2 & 3 BHK MODERN HOMES & SHOPS

Beside City Square Mall, Godrej Garden City,  
Jagatpur, Ahmedabad - 382470